



MICORUS

2-WAY CEILING SPEAKER
MC-WSP-180



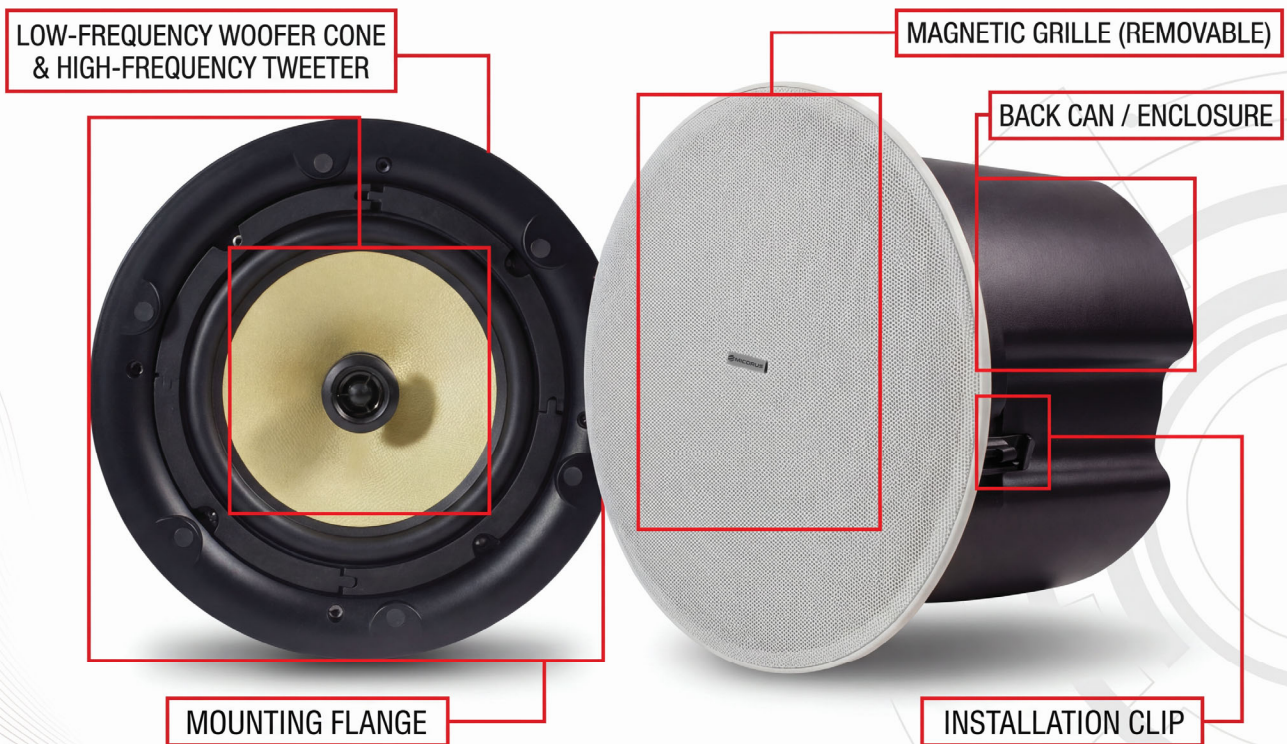


WAY CEILING SPEAKER

MC-WSP-180

DESCRIPTION

The MC-WSP-180 is a high-performance, 2-way ceiling speaker engineered for environments that demand superior audio fidelity and high-impact sound pressure. It features a premium 8-inch Kevlar driver paired with a 0.5-inch tweeter, delivering exceptional sound reproduction with deep lows and crisp highs. This model is specifically designed with an internal crossover network to ensure a smooth transition between frequencies, resulting in a clear and powerful acoustic experience. With a massive 160W maximum power capability and a wide 180° dispersion angle, it provides uniform sound coverage across large spaces, making it the perfect solution for high-end commercial music venues, auditoriums, and luxury retail environments.

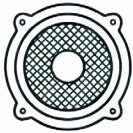




CEILING SPEAKER

MC-WSP-180

FEATURES



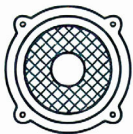
Advanced 2-Way System: Combines an 8" Kevlar woofer and a 0.5" tweeter for true high-fidelity sound.



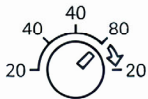
Exceptional Power Handling: Supports up to 80W at 8-ohm with a peak power capacity of 160W.



High-Quality Crossover: Built-in crossover technology ensures precise audio separation and powerful output.



Kevlar Driver Technology: Utilizes high-durability Kevlar for superior cone movement and accurate sound reproduction.



Flexible Power Tapping: Features multiple taps for 100V (20W/40W/80W) as well as an 8-ohm bypass option.



Extreme Sound Pressure: Capable of reaching a maximum SPL of 120dB, ensuring high-volume clarity.



Wide Dispersion: Offers a full 180° dispersion angle, minimizing dead zones in large-scale installations.



Heavy-Duty Build: Constructed with a robust ABS enclosure and weighing 4.5kg, reflecting its professional-grade components.



Easy In-Ceiling Installation: Optimized for standard ceiling mounting with a 245mm cutout for a secure fit.



TECHNICAL SPECIFICATIONS

- GENERAL INFORMATION



Model: MC-WSP-180

- POWER & PERFORMANCE



Power at 100V
80/40/20W/OFF-8ohm



Power at 8ohm
80W



Max Power
160W



SPL(1W/1M)
98dB



SPL(1W/1M)
98dB



Max SPL@ 1M
120dB



Freq. Response
105-20KHz



Dispersion Angle
180° (1000Hz)

INSTALLATION & DIMENSIONS



Cutout Size
Dia 245mm



Product Size
Dia 285x195mm



Installation
In ceiling



MATERIAL & BUILD



Enclosure Material
ABS



Color
Black

PHYSICAL SPECIFICATIONS



Net Weight
4.5kg



Speakers
**8" woofer x1,
0.5" tweeter x1**